

Oncology education for Nurses in Belgium

Banaba Oncology



ARTESIS PLANTIJN
HOGESCHOOL ANTWERPEN



arteveldehogeschool
LID VAN DE ASSOCIATIE UNIVERSITEIT GENT

Karel de Grote-
Hogeschool
start met voorprong

Nursing education in Belgium

- Basic nursing education in Belgium
 1. HBO5 –level 5 EQF, diploma granted
 2. Professional bachelor's – level 6 EQF, degree granted
- Generalised education
 - possibility of subspecialisation in the last year
 - clinical work placements and choice of thesis project
- Further specialisation in many fields can be obtained through post-graduate study after qualification.
 - 17 areas recognised
 - 11 specialist titles

Oncology nursing

- Since 2009 a special title for oncology nurses has been recognised by the Federal Department of Health
 - “Bijzondere beroepstitel van verpleegkundige gespecialiseerd in de oncologie” (BBT)
 - “Titre professionnel particulier d'infirmier spécialisé en oncologie” (TPP)
- Nurses with this title receive an increased annual wage and are able to administer chemotherapy and take on other more senior roles in oncology nursing.

Requirements of the BBT/TPP

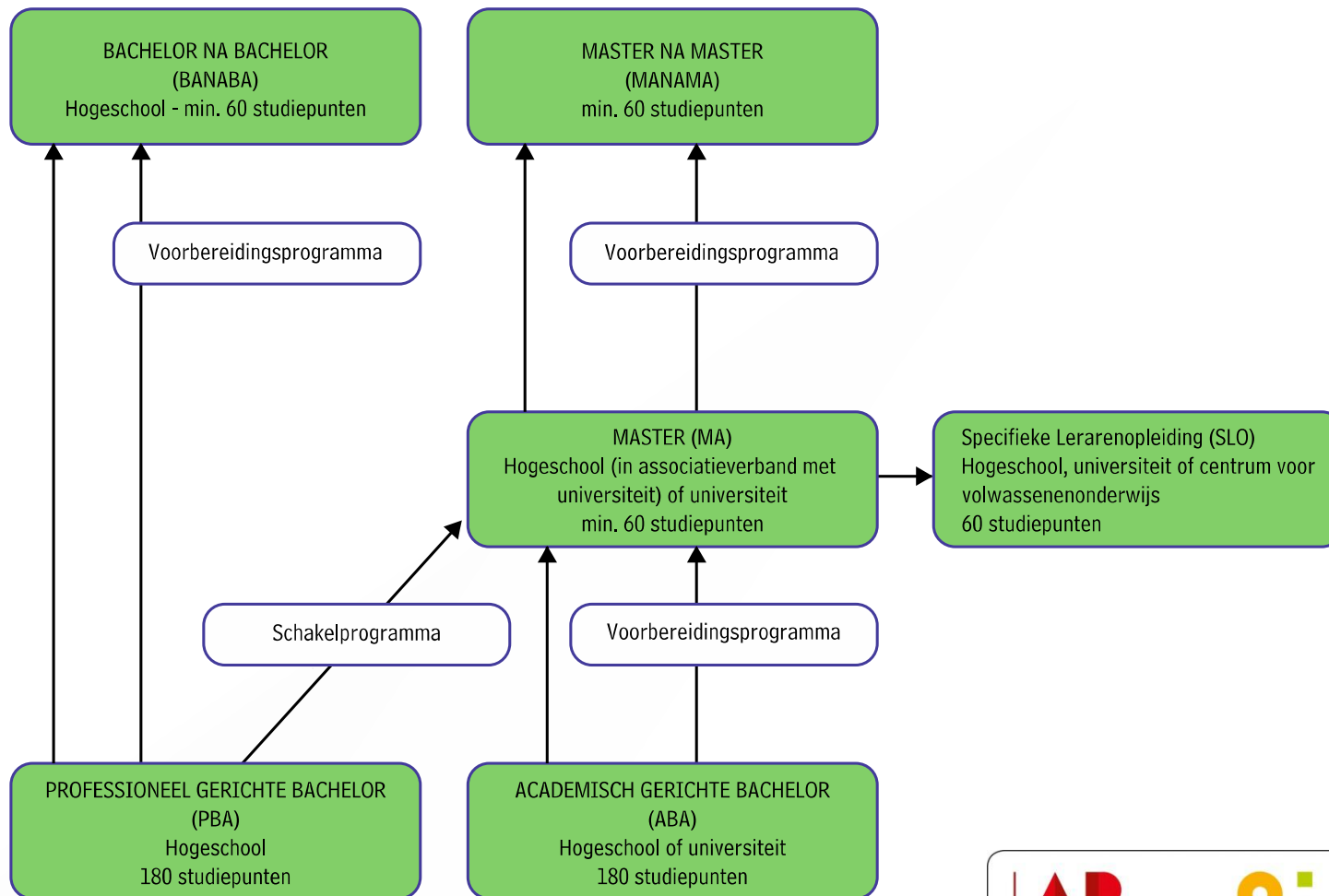
February 2009 to
August 2012

- Minimum bachelor level/registered as graduate nurse
- Post-basic education in oncology (min 150 hours)
 - e.g. Post-Graduate Certificate
- Clinical experience with Oncology patients

From September 2012

- Minimum bachelor level/registered as graduate nurse
- Specialist course accredited by Flemish/Walloon authorities
 - 60 ECTS (European Credit Transfer and Accumulation System)
 - BaNaBa/formation post-Bachelier

BaNaBa – a Bachelor after (na) bachelor



Further education in Oncology – federally determined requirements

450 hours
theory
(30 ECTS)

- **Nursing sciences**
 - Ethics, research methods, cancer prevention, radioprotection and working with cytotoxics
- **Biology and Pathology**
 - Diagnosis and treatment
 - Pharmacology, radiotherapy, surgery
- **Social sciences**
 - Psychosocial aspects, culture and religion, law and legal aspects

450 hours
practice
(30 ECTS)

- Generalised/specialised medical oncology/haematology
- Palliative care
- Radiotherapy

Life long learning

- Further education in Oncology required to maintain the BBT/TPP
 - A minimum of 60 hours of training/education over 4 years
 - Roughly 2 days a year
 - A minimum of 1500 hours of practice in 4 years
 - 50 days a year

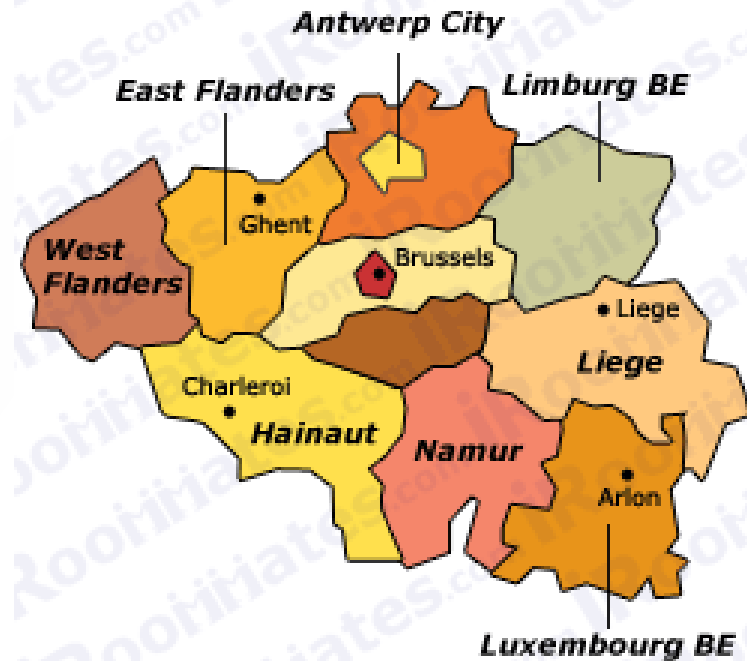
Programmes in Belgium

- Programmes are offered at ‘Hogescholen’ and ‘Ecoles superieures’ across Belgium
- University Colleges are independent institutes of learning that are linked with Universities
- Offer degrees in areas with a practical component such as nursing, social work, teaching, and commercial sciences

Our programme – BaNaBa in de oncologische verpleegkunde

- Three University Colleges across two provinces in Flanders
 - Range of expertise in lecturers and placement opportunities
 - Delivered on three sites in two cities (Antwerp and in Ghent)
 - Launched in September 2013
 - Coordinated jointly between the three schools
 - Karel de Grote Hogeschool is the leading institution and the programme follows the school's regulations

Belgium



ARTESIS PLANTIJN
HOOGESCHOOL ANTWERPEN



arteveldehogeschool
LID VAN DE ASSOCIATIE UNIVERSITEIT GENT

Karel de Grote-
Hogeschool
start met voorgrond

Our programme – the students

- Minimum requirement to register
 - professional bachelors in nursing or graduate nurse
- Newly graduated full-time students
OR Work-students based in their own clinical areas
- Modules can be spread over 2 years
- Can register for single modules
- Modules can be audited

Overview of modular curriculum (theory = 30 ECTS)

Module 1: Science of oncology (6 ECTS)

Pathophysiology, diagnosis and staging, chemotherapy and radiotherapy

Module 4: Specialist module (6 ECTS)

Haematology, paediatric or breast cancer
Offered on a rotating basis each year
Focus on Ethics within this module

Bachelor project (6 ECTS)

Academic work (including literature review) and a relevant evidence-based project for the 222 hour placement area

Module 2: Oncological disease (6 ECTS)

Site specific disease: Gynaecology, head and neck, digestive/urological, skin and sarcoma, brain/neurological

Module 3 Supportive aspects (6 ECTS)

End of life care, the patient and environment, working with families and caregivers, supportive care

Overview of modular curriculum (practice= 30 ECTS)

222 hours in generalised or specialised oncology

Can be own workplace if sufficient oncology patients/exposure
Placement assignment focused on chemotherapy

76 hour placement in palliative care

Placement assignment focused on pain and/or patient circumstances

76 hour placement in radiotherapy

Placement assignment focused on prevention/treatment of side-effects in radiotherapy

76 hour placement of students' choice

Placement assignment focused on questions around nursing ethics in practice

Off to a good start

- More than 30 students registered over two cities
- Two modules completed with good success rates on the exams and positive feedback from students and lecturers alike
- Strengths
 - Large pool of expert clinicians to deliver relevant content
 - Also strengthens links between academics and practice
 - Also on development and steering committees
 - Wide-range of placement areas to offer students
 - A study days are also being accessed by nurses wishing to maintain their titles
- Challenges
 - Supporting both recently graduated students with little clinical experience and students doing placements in their own workplace
 - Tweaking practice evaluation documents to reflect varying levels of experience and expertise

Coordinating team/contact

- An Aerssens: Artevelde University College, Ghent
 - An.Aerssens@arteveldehs.be
- Kate Meier: Artesis-Plantijn University College, Antwerp
 - kate.meier@ap.be
- Helena Verheyen: Karel de Grote University College, Antwerp
 - helena.verheyen@kdg.be