

Psychosocial support: organisation, implementation and experiences

International Congress of Breast Disease Centers

February 5, 2015

Tiny Van Keymeulen



Public funding on social support in Belgium

National Cancer Plan

Initiative 10:

- 1 FTE nurse specialised in oncology/ 250 MOC's
- 1 FTE psychologist / 250 MOC's
- 1 FTE social worker / 500 MOC's

Initiative 11:

- 1 FTE data manager / 1000 MOC's
- 1 FTE dietician / 500 (max 4 FTE)

Accreditation of Breast Clinics in Belgium

Royal Decree of April 26, 2007

A specialized oncology care program for breast cancer:

a package of patient care that focuses on the diagnosis, the multidisciplinary consultation, the multidisciplinary treatment, rehabilitation and follow-up of patients with malignant diseases of the breast.

Activity level:

- annually at least 125 new diagnoses



Accreditation of Breast Clinics in Belgium

Multidisciplinary oncological consultation:

- weekly multidisciplinary consultation: for all patients who were given a new diagnosis.
- report explains in detail the care plan with a description of the treatment of the patient

Medical staff:

- two specialists in Surgery or Gynecology and obstetrics
- two specialists in Medical Imaging
- specialist in Oncology
- specialist in plastic, reconstructive and aesthetic surgery
- specialist in pathological anatomy
- specialist in radiation oncology

Accreditation of Breast Clinics in Belgium

Medical coördination:

- a specialist of the medical staff

Nurse staff

- from 125 new diagnoses: 1 FTE nurse specialised in oncology
- from 350 new diagnoses: 2 FTE nurses specialised in oncology

Assignment: coordination of the implementation of the care plan that has been established during the multidisciplinary consultation.

Certified Breast Clinics in Belgium

Psychosocial care staff:

- from 125 new diagnoses: 0,5 FTE psychologist
- from 350 new diagnoses: 1 FTE psychologist

Rehabilitation

- Rehabilitation program with physical, psychological and social rehabilitation
- A physical therapist is responsible for the physical rehabilitation that involves functional measurements.

Supportive services

- Flemisch institute for psychosocial oncology



- Centre de Psycho-Oncologie (CPO)
- Belgian Society of Psycho Oncology



- Society for Radiotherapy and Oncology Nurses (VVRO)



- Workgroup Flemish Breast Nurses (VBV)
- Société belge des infirmier(e)s en oncologie (SIO)
- Belgian Oncology Nursing Society (beONS)

Psychosocial support in OLV hospital

Oncological Psychosocial Support Team

Policy and action plan

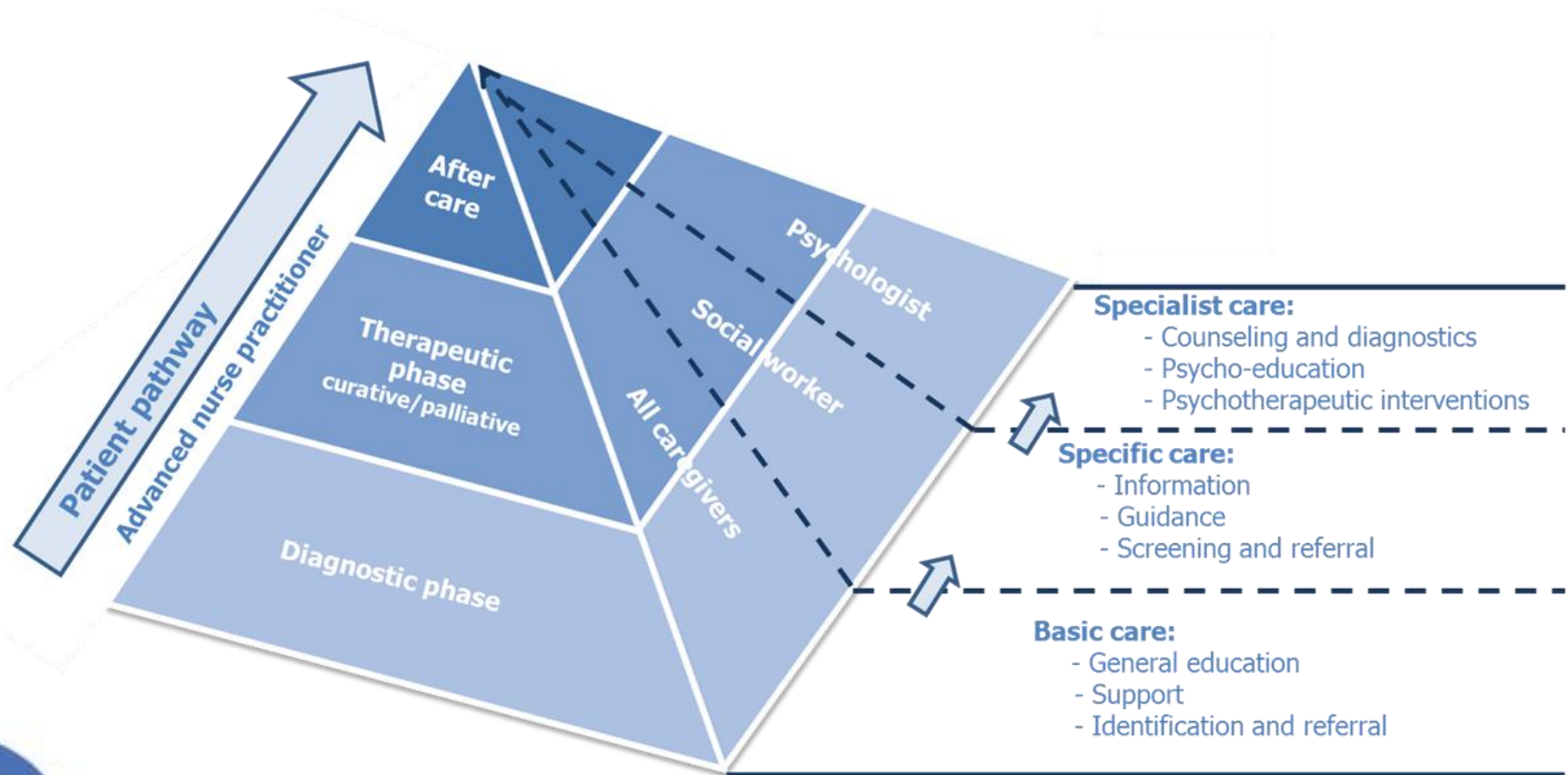
Vision:

- Continuous and active support of all cancer patients and their family
- Optimization of physical, psychological and social functioning
- During the disease, the treatment period and the aftercare
- A continuity that goes from relatively non-specific support for focused, specialized psychosocial oncology care

Objective:

- Total oncological care on the basis of 9 sub-objectives

Continuity of care:



OLV Breast Clinic

Psychosocial support:

- Advanced Nurse Practitioner / Breast nurse: 1 FTE
- Social nurse/ Breast nurse: 1 FTE
- Oncopsychologist: 1 FTE

Close collaboration with:

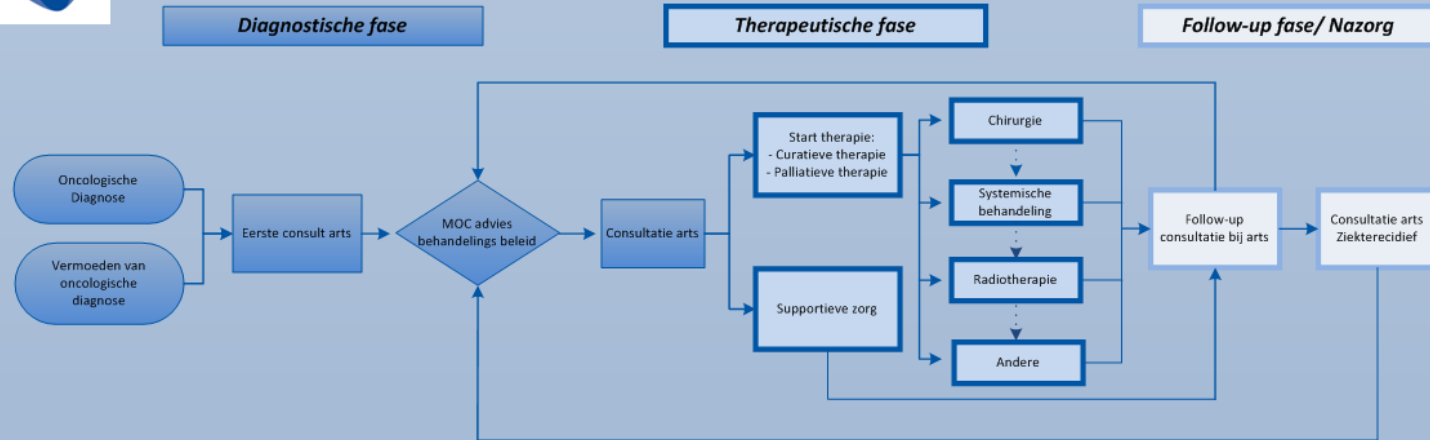
- Reference nurses
- Physical therapist
- Dietician
- Prothesis consultant
- Peer association
- Home care
- ...



Psychosocial care pathway



Zorgpad Psychosociale zorgverlening aan oncologische patiënten en hun naasten in het OLV ziekenhuis



Verpleegkundig specialist OPST* / consultant OPST wordt indien nodig gecontacteerd

Doel:

- continuïteit van het zorgtraject bewaken
- psychosociale noden/ problemen detecteren en indien nodig doorverwijzen naar sociaal verpleegkundige/ psycholoog OPST

	Borstkliniek:	4966
	Pneumologie:	4032
	Hematologie:	8853
	Digestieve oncologie:	8854
	Radiotherapie:	4015

Aan te vullen (med onco; uro; gynaeco, ...)

Verpleegkundig specialist oncologie/ consultant neemt deel aan multidisciplinair oncologisch consult (MOC) + bewaakt dat besproken patiënten door OPST worden opgevolgd – cfr overzicht specifieke **MOC afspraken per discipline**

Sociaal verpleegkundige informeert patiënt over praktische verloop (palliatieve) behandeling en adviseert patiënt en familie bij persoonlijke, familiale, financiële of administratieve problemen tgv de oncologische pathologie

	Borstkliniek:	4018
	Pneumologie:	4013
	Hematologie:	4014
	Digestieve oncologie:	4702
	Radiotherapie:	4015

Aan te vullen (med onco; uro, gynaeco, ...)

cfr overzicht specifieke **MOC afspraken per discipline**

De patiënt en/ of familie mag op elk moment van het oncologisch traject doorverwezen worden naar de klinisch psycholoog. Dit kan op vraag van:

- huisarts, verpleegkundig specialist/ consultant, sociaal verpleegkundige, verpleegkundige of andere ziekenhuismedewerker
- patiënt of familie
- multidisciplinair overleg.

	Borstkliniek:	4033
	Pneumologie:	4703
	Hematologie:	8712
	Digestieve oncologie:	4701

Aan te vullen (med onco; uro, gynaeco, ...)

* OPST: Oncologisch psychosociaal support team



Crucial moments

Diagnostic phase:

- Multidisciplinary consultation: discussion about diagnosis & care plan

Therapeutic phase:

Start & end of therapy

- Surgery
- Systemic treatment with chemotherapy and / or targeted therapy
- Radiotherapie
- Continuity of care during the palliative phase

Supportive care

Follow-up phase/aftercare:

- Multidisciplinary consultation: evaluation of care plan

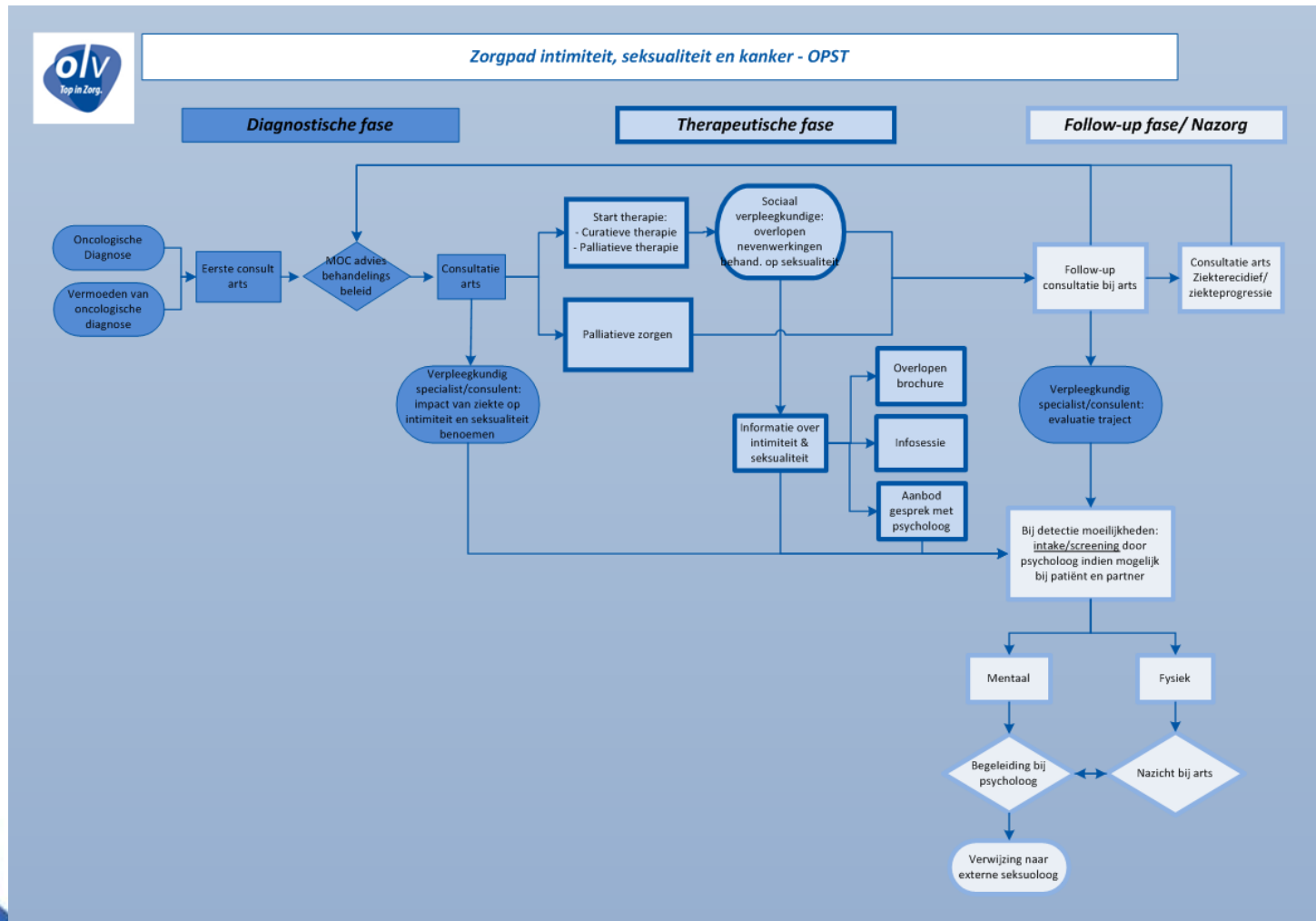
Activities

- Oncological rehabilitation program
- Information sessions:
 - Breastcancer, diagnosis and treatment
 - Hormones, menopause and cancer
 - Breastreconstruction
 - What to do with the ongoing fatigue
 - ...
- Workshops:
 - My story. A conversation with peers.
 - Living together with cancer. A partner program.
 - Facial Treatments (individual and group sessions)
- Day for Cancer patients
BRA-day

Projects

- Intimacy, sexuality and cancer
- Genetics and cancer
- Oncology: be aware of kids!
- Cancer and (returning to) work
- Palliative care in oncology
- OPST-library
- Psychosocial screening
- Patient information brochure

Example



Example

Oncology: be aware of kids!

- an open family corner designed for children when they come to visit their (grand) parent



- a child- and family- friendly room for psychotherapy



Thank you for your attention

